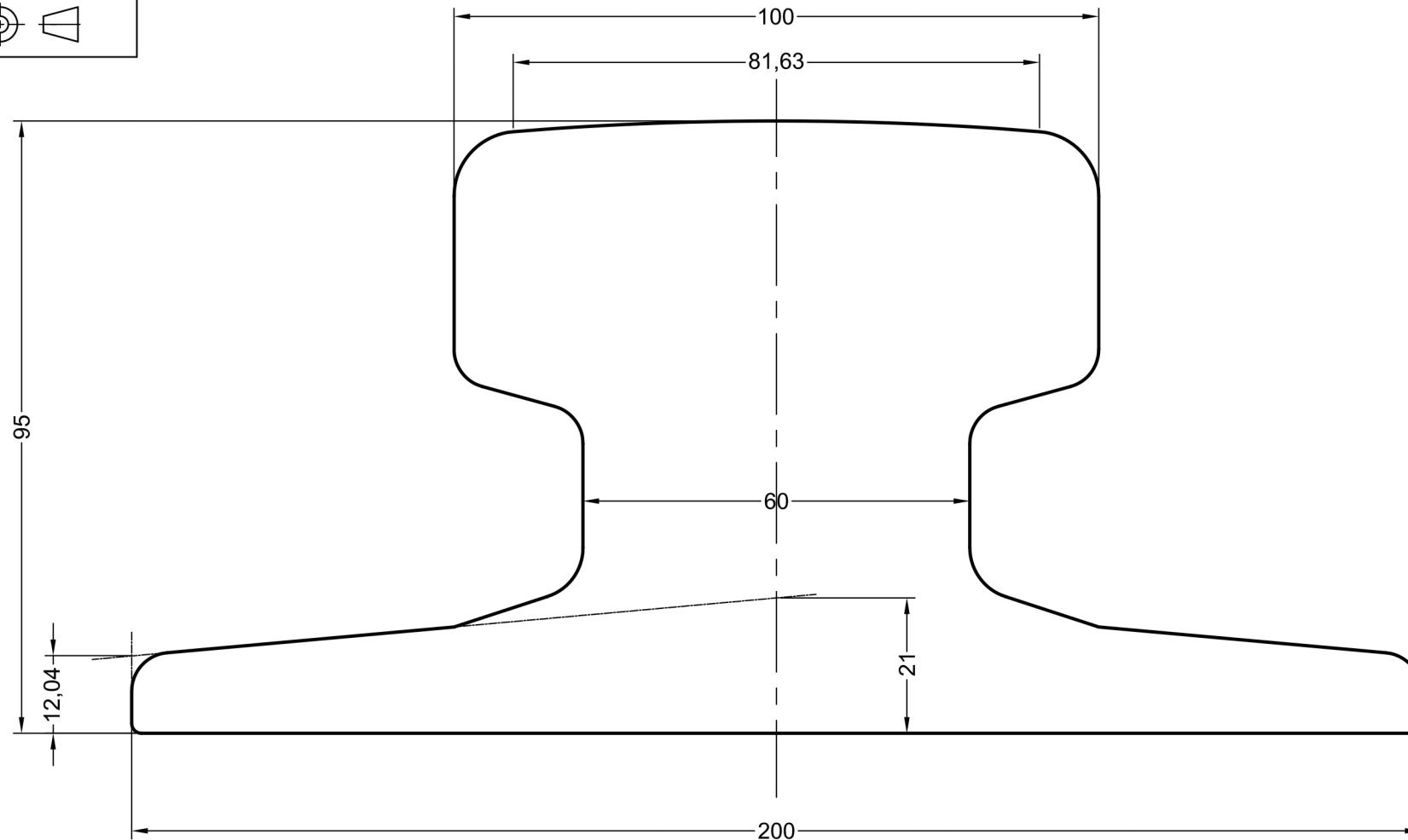
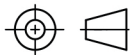


THIRD ANGLE PROJECTION



NOTE: THE PROPERTIES SPECIFIED BELOW HAVE BEEN CALCULATED USING AUTOCAD SOFTWARE AND ARE ACCURATE AT THE TIME OF THIS DRAWING ISSUE. THESE FIGURES MAY DIFFER SLIGHTLY FROM THOSE PUBLISHED IN THE STANDARD FOR THE RAIL.



**Anyang General International  
Co., Ltd.**

Tel: +86 372 5081 703  
Email: [info@rail-fastener.com](mailto:info@rail-fastener.com)  
<http://www.rail-fastener.com>

Rail Designation A100

Rail Origin GERMANY

Standard DIN 536

Area of section 9506 mm<sup>2</sup>

Calculated Mass 74.3 kg/m

Neutral Axis to base 42.5 mm

Moment of Inertia Ixx 870 cm<sup>4</sup> Iyy 1342 cm<sup>4</sup>

Edition B

Date 06/07/10

Scale 1 :1 @ A4

FOR GUIDANCE ONLY  
THIS INFORMATION HAS BEEN  
PROVIDED IN GOOD FAITH BUT  
SPECIFICATIONS DO CHANGE